

A portrait of Clare O'Neil, a woman with short, wavy blonde hair, smiling and wearing a red blazer. The background is a blurred outdoor setting with greenery and a brick wall.

**Clare** O'Neil MP

# Delivering for you in Hotham

Dear resident,

Representing you and your household in Federal Parliament is a huge responsibility, and one I take very seriously.

You are my neighbours. My kids might play sport with yours. We walk our dogs in the same parks, and love the same coffee shops. We share the same hospitals, local pools, childcare centres and roads.

Since 2022, I've fought to get your household help with the cost-of-living. **Energy bill relief, tax cuts for every taxpayer, cheaper medicines, fee-free TAFE, wage increases and more.**


And it has been a fight. Every step of the way, the Liberals have fought these measures, voting against vital policies that households in our community have depended on to get by.

I've pushed hard for our fair share of local investment. The map overleaf is not a complete list of what we've delivered – there's so much more than this. But it hopefully gives you a sense of some of the key measures. And, there's a lot more to come.

I want to make sure you're getting all the support you're eligible for so, if you're unsure, please contact my office and we will give you a hand.

Finally, I always love to hear what's on your mind – so please, anytime, drop me an email ([Clare.Oneil.MP@aph.gov.au](mailto:Clare.Oneil.MP@aph.gov.au)) and let me know what matters most to you, or let me know if I can help you and your family.

See you soon,

A handwritten signature in black ink that reads "Clare O'Neil".

– **Clare**

Federal Member for Hotham

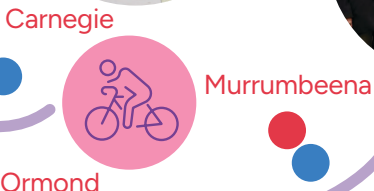


# How the Albanese Labor Government has invested in our neighbourhood since 2022 – a snapshot

**Carnegie Memorial Swimming Pool**  
\$15M towards redevelopment



**Packer Park Cycling Pavilion**  
\$1.53M towards redevelopment



**Oakleigh Grammar**  
\$200K amenities upgrade



**Sacred Heart Girls' College**  
\$1.5M towards Wominjeka Centre construction



**Glen Eira Sports and Aquatic Centre**  
\$2.5M electrification upgrade



**Cancer research innovation**  
\$3M towards early pancreatic cancer detection (Nanocube Health)

**Supporting students**  
Clarinda Primary School is one of 45 schools receiving the Student Wellbeing Boost

**Namatjira Park**  
\$9M+ facilities upgrade

**Moderna Technology Centre**  
Supporting Moderna's vaccine facility, producing vaccines for our community

**Westall Primary School**  
\$570K+ for playground upgrade

**Bright Moon Buddhist Temple Society**  
\$15K support for the rebuild after their fire

**Jack Edwards Reserve**  
\$2M contribution to upgrade the home of Oakleigh Cannons Football Club and Chisholm United Football Club

**Wiping \$3B in student debt**  
Benefitting 23,000 locals like John (and will cut existing HECS debt by 20% if re-elected)

**Social and affordable housing**  
431 homes will be funded through the first round of the Housing Australia Future Fund in Bentleigh East, Carnegie, Clayton and Murrumbeena

**Record veteran support**  
Impacting 1,490+ veterans, including members of our local RSLs

**NBN investment**  
21,500+ premises upgraded to high speed full-fibre internet bringing gigabit capable speeds to over 96% of Hotham

**Supporting language schools**  
\$290K towards language schools, including Dari and Mandarin schools in Springvale

**Student Wellbeing Boost**  
Supporting student mental health for 45 local schools, averaging \$20K each

**Black Spots Program**  
\$2M+ for improving road safety  
**Roads upgrades**  
\$26M funding to local roads, over a five-year investment

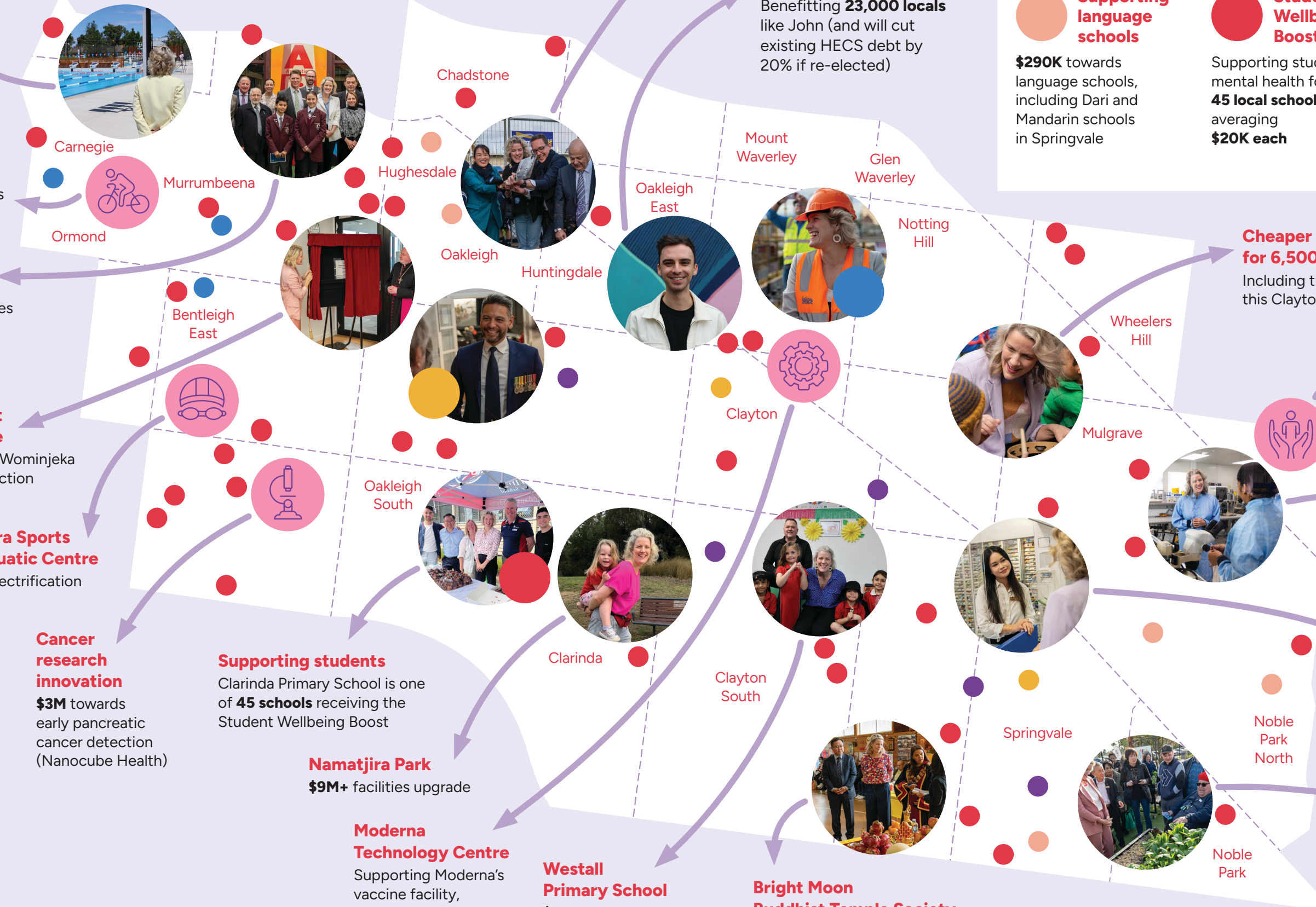
**Cheaper childcare for 6,500 families**  
Including the 75 families at this Clayton childcare centre

**Hawks Foundation's Inclusion Project**  
\$1.5M grant, aiding people at live sports with sensory spaces

**Advancing digital pathology**  
\$3M towards AI microscopy to monitor patients remotely in real time (Optiscan Imaging)

**Cheaper medicines**  
Already saving locals \$7.7M+

**Noble Park Community Centre**  
Accessible garden for all ages and abilities through the Stronger Communities Programme





# What the Albanese Labor Government has delivered since 2022

## Cost of living

### Tax cuts

**86,000+**

local tax-payers benefit, averaging **\$1,411 each**

### Power rebates

**\$300 rebate**

for 93,000+ homes

**\$325 rebate**

for 19,000+ businesses

### Cheaper childcare

Impacting **6,500+** local families

### Real wage growth

More Australians are working, earning more and keeping more of what they earn

## Health

### Cheaper medicines

Locals already saved **over \$7.7 million** on freezing the maximum cost of a PBS medicine, plus 60-day dispensing

### Bulk billing

**64,000+**

residents accessed **199,000+** bulk-billed pathology tests last year

### Free RSV vaccine

Providing world-leading protection to **over 1,800 babies** born each year

## Seniors & Pensioners

### Cheaper medicines

Prescriptions frozen at **\$7.70** for pensioners

### Biggest aged care reform in 30 years

A rights-based system putting quality and safety first

### Free shingles vaccine

**31,670+** people aged 65 years and over eligible

### Nurses on site

On average, there's a registered nurse in aged care homes **98% of the time**

## Housing

### Home Guarantee Scheme

Helped locals buy **240+** homes with smaller deposits

### Rental support

Boosting Commonwealth Rent Assistance, which is received by **8,455+ locals**

### More rental properties

**218+** new rental homes in the pipeline with secure, long-term leases

## Disability

### Improved NDIS outcomes

Impacting **3,900+** locals

### Specialised disability employment program

Supporting **1,200+** people with disabilities

## Skills

### \$5,000 apprentice incentives boost

**Up to 1,855**

Hotham apprentices in priority occupations eligible. From 1 July, new housing apprentices will receive \$10,000

## Education

### HELP debt support

Impacting **23,000+** locals, ensuring student debt doesn't grow faster than wages

**Plus fee-free TAFE** and Prac Payment for mandatory placements

A re-elected Labor Government will **cut student debt by 20%**

## Women

### Expanded paid parental leave

**26 weeks** up from 18 weeks, plus super on Paid Parental Leave

**Cheaper childcare** And **\$1 billion** to build new centres

**Clare O'Neil MP**  
Federal Member for Hotham

**Labor**



 @clareoneilmp

 @clareoneilmp

 @ClareforHotham

 @ClareONeilMP

 [www.clareoneil.com](http://www.clareoneil.com)

 [Clare.oneil.mp@aph.gov.au](mailto:Clare.oneil.mp@aph.gov.au)

 (03) 9545 6211

 17–19 Atherton Rd, Oakleigh VIC 3166

Authorised by Clare O'Neil,  
Australian Labor Party, 17–19 Atherton Rd,  
Oakleigh VIC 3166. Printed by Kosdown  
Printing, 10 Rocklea Dr, Port Melbourne  
VIC 3207.